

Jurys Inn Birmingham



This access statement describes the services and facilities associated with Jurys Inn Birmingham. Information provided is correct at time of publication 01.11.15

INTRODUCTION

Hotel Details

Address: Jurys Inn Birmingham
245 Broad Street
Birmingham
B1 2HQ

Telephone: 0121 606 9000

- Option 1: Reservations
- Option 2: Group Reservations
- Option 3: Meetings and Events
- Option 4: Directions and car parking information
- Option 5: Accounts
- Option 6: Reception for any other enquiries

Fax: 0121 626 0627

Email: jurysinnbirmingham@jurysinns.com

We look forward to welcoming you to Jurys Inn Birmingham soon. If you do have any queries or require further assistance, please do not hesitate to get in touch via any of the above methods. If your query is urgent please call the hotel reception.

Hotel Layout

Jurys Inn Birmingham is a city centre hotel which has 445 bedrooms spread over 15 floors and 20 meeting rooms on a dedicated conference floor.

The Lower Ground floor provides internal access to our car park.

The Upper Ground floor comprises of our main entrance (via Broad Street), our reception/check in area, the bar, our restaurant The Grill on Broad Street and the lounge area.

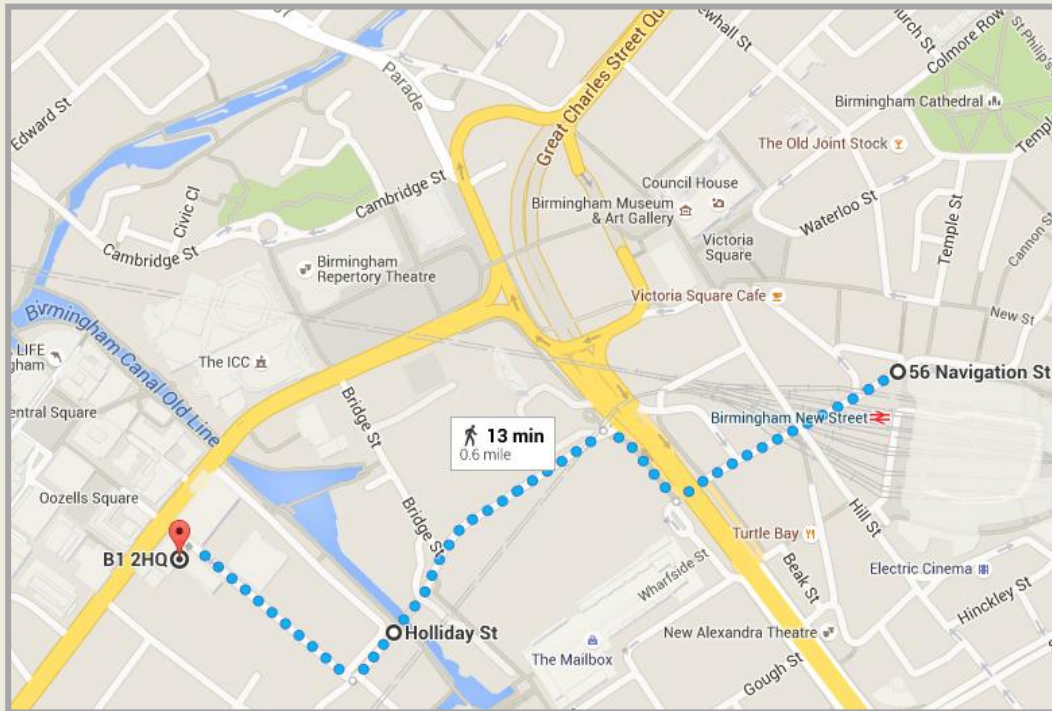
The 1st floor is our dedicated conference floor.

The 2nd floor to the 16th floor accommodates our 445 bedrooms.

Every floor is accessible by either one of our 4 lifts. There is also a staircase accessible via the double doors adjacent to the lifts, which services all floors.

HOW TO FIND US

Walking Directions from New Street Station via City Centre



Distance and walking time: 0.6 miles, 13 minutes

- Exit the station from the main doors and walk onto Stephenson Street
- Follow onto Navigation Street.
- Walk straight, towards the Mailbox which will be in front of you.
- You will walk under a flyover before reaching the Mailbox.
- Turn right and follow the buildings round until you hit the start of Holiday Street.
- Turn left onto Holiday Street.
- Walk 0.3 miles along Holiday Street.
- Turn right onto Berkley Street.
- Walk straight up Berkley Street and you will see our hotel car park on your left hand side. You may access the Lower Ground floor from here.
- Alternatively continue straight on Berkley Street, until you reach Broad Street. You may access our main entrance on the Upper Ground floor from here.

Driving Directions from Major Motorways

Driving Via M6

Leave the M6 at Junction 6 and follow the A38 (M)
Follow the road signs to "City Centre, Bromsgrove (A38)"
Continue over the flyover and through the Queensway Underpass.
Exit the underpass, keeping in the left hand lane
Bear left onto Great Charles Street.
At the Paradise Circus roundabout, take the 2nd exit onto Broad Street (A456)
Drive along Broad Street (A456) and take the 2nd left onto Gas Street
At the end of this street, bear right.
Take the next right which will bring you onto Berkley Street
Our carpark is situated on the left, just before the hotel.

Driving via M5

Leave the M5 at Junction 3
Travel along the Hagley Road (A456) for 5 miles towards the Five Ways roundabout,
At this roundabout bear right into the underpass and drive along Broad Street (A456)
Drive past Jurys Inn (your right hand side) and take the next right onto Gas Street.
At the end of this street, bear right.
Take the next right which will bring you onto Berkley Street
Our car park is situated on the left, just before the hotel.

Driving via M42

From M42 East Midlands, join the M6 heading towards Birmingham Central
Leave the M6 at junction 6
Follow directions via M6 as above.

Driving via M40

Arrive on the M42 and travel West towards the M5.
Travel North on the M5 and exit at Junction 3.
Follow directions via M5 as above.

Driving from the NEC

Follow the Coventry Road (A45) towards the City Centre for approximately 6 miles.
At the roundabout (Citroen Showroom), take the 1st exit following signs for M5, NIA and ICC.
Travel along the Bordesley Middleway for approximately 500 meters.
At the roundabout (PC world) take the 3rd exit, following signs for M5, NIA and ICC.
Continue along the duel carriageway (A4540)
Go through the underpass leading up to the Five Ways roundabout.
At the Five Ways roundabout take the 4th exit onto Broad Street (A456)
Drive past Jurys Inn (your right hand side) and take the next right onto Gas Street.
At the end of this street, bear right.
Take the next right which will bring you onto Berkley Street
Our car park is situated on the left, just before the hotel.

CAR PARK

General Details

The Jurys Inn Birmingham hotel has onsite multi storey car parking available, which at full capacity has 200 spaces for public and hotel use.

This is situated directly behind the hotel and is accessible via Berkley Street.

The height restriction on the multi storey car park is 1.7 meters.

A limited number of accessible parking spaces and open bays for taller vehicles are located outside of the multi storey facility near the Lower Ground hotel entrance. For these spaces please turn right as you come through the barrier. The multi storey is located on the left.

The car park is well lit and the surface of the car park is concrete.

All cars are parked at the owner's risk.

Access to all upper floors of the multi storey is via stairwell only.

We have a member of our security team on duty 24 hours a day. This member of staff is based in the security lodge which is situated at the entry to the carpark.

There is a buzzer on the ticket issuing machine at the entry barrier, which can be used if any assistance is required.

Please advise if you would like assistance in transporting luggage from the car park to the hotel.

Payment and Tariff (subject to change)

A ticket will be issued to each vehicle entering the car park. Please use this ticket to settle any balance in the pay machine at the time of departure. The pay machine is situated immediately to the left upon entry to the multi storey car park.

Up to 1.5 hours	£ 1.50
Over 1.5 hours to 2.5 hours	£ 3.00
Over 2.5 hours to 3.5 hours	£ 4.00
Over 3.5 to 6.5 hours	£ 6.00
Over 6.5 to 10.5 hours	£ 9.50
Over 10.5 hours to 24 hours	£14.20

Parking is complimentary for all guests who can produce a valid Blue Badge.

TRANSPORT LINKS

Trains

Jurys Inn Birmingham is easily accessible from all major transport links and is less than 1 mile from New Street Station, Moor Street Station and Snow Hill Station. Please see walking directions from New Street station on page 2.

Further information and timetables on trains into and out of Birmingham stations, please check www.thetrainline.com or www.firstgreatwestern.co.uk

Buses

National Express operates local bus services in and around the Birmingham, Black Country and Coventry area.

There are stops for regular buses situated outside the hotel on Broad Street. Many routes link the hotel to other areas of the city centre and other popular local destinations.

Further information can be found at www.nxbus.co.uk. Alternatively for further public transport information via telephone please call their helpline direct on 0871 200 2233.

Coaches

The National Express Coach Station is on Mill Lane, Digbeth (B5 6DB) For new bookings, timetabling and general enquiries please contact the National Express customer contact centre on 0871 7818181 (lines open 24 hours a day, 7 days a week) or check www.nationalexpress.com

Airport

The nearest airport to Jurys Inn Birmingham is Birmingham International and this is approximately 14 miles from the hotel.

Trains run from Birmingham International train station to Birmingham New Street every 10 -15 minutes at peak times. There is also a 24 hour taxi rank outside the airport.

Taxis

There is one 24 hour taxi rank situated adjacent to the hotel and another situated opposite the hotel main entrance. Alternatively black cabs can be booked at our reception desk or via Comcab on 0121 566 8000

ENTRANCES

There are 2 points of access for entrance to the hotel. One is situated on the Lower Ground floor and the other on the Upper Ground floor.

Lower Ground Entrance

Car park entrance: This is the closest entrance to use if you are using our car park and is accessible via Berkley Street. The width of the automatic entrance doors is 35 inches.

Lifts: Please make your way to the lifts and process to our Upper Ground floor where our reception is located for check in.

Lighting and flooring: This floor is well lit and carpeted in all areas.

Upper Ground Entrance

Main entrance: This is on the Upper Ground floor and is accessible via Broad Street. There are a few steps connecting the street level to the hotel doors. There is also a ramp to the right of the steps for luggage, wheelchair and pushchair access. This entrance has two regular doors which open by push or pull and one manual revolving door.

Reception area: Once inside the hotel, the reception area is to the immediate left. This is in a raised area which is accessible via steps. This is the only raised area on this floor. If you do not wish to use this raised area to check in, a member of staff will be happy to assist you from a level floored area.

Luggage room: This is on the right as you enter through the main doors.

Lifts: There are 4 lifts available which service all floors.

Lounge, Bar and Restaurant: The lounge, bar and restaurant areas have level flooring with the entrance. There is seating available here for all hotel guests.

Lighting: All areas on this floor are well lit, however intensity of lighting will vary depending on the time of day.

Flooring: The reception and lift lobby has marble flooring, the lounge bar and restaurant is a mix of laminate tiling and carpet.

If you wish to book a show around of the property please contact the hotel directly on 0121 606 9000 and ask for our Sales team.

BEDROOMS

Jurys Inn Birmingham has 445 bedrooms in total, in a mix of double bedded, king bedded (image 1) and twin bedded rooms (image 2). Double rooms and king rooms can accommodate up to 2 adults. Twin rooms can accommodate up to three adults, or two adults with two children under twelve.

All Bedrooms

Our bedrooms are located from the 2nd floor to 16th floors only.

All floors are accessible by lift and stairs.

All doors have eye level spy holes and can be opened via electronic key card which is issued upon check in.

All doors are marked with the room number. These numbers are not raised in a braille format.

The height of the beds to the top of the mattress is 29 inches.

Bedding is none feather.

All rooms are lit with wall lights, a desk lamp and headboard spotlights.

All rooms are carpeted.

Telephones in the bedrooms are not large-buttoned,

Furniture in bedrooms can be moved by hotel staff only, if required.



Image 1

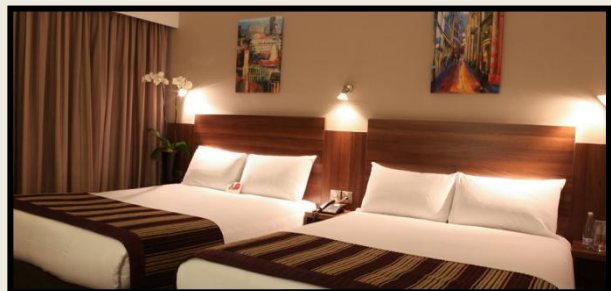


Image 2

Interconnecting Rooms

From the 3rd floor to the 13th floor, we have 2 sets of connecting rooms per floor.

An 03 room (1 double bed) connects to an 04 room (1 double bed).

An 05 room (1 double bed) connects to an 06 room (2 double beds).

Accessible Rooms

From the 3rd floor to the 8th floor we have 2 accessible rooms per floor.

These rooms are close to the lift area for easier access in the event of an evacuation procedure taking place. These floors also have a refuge point by the lift with a 2 way intercom allowing direct access to the Duty Manager.

These rooms do have interconnecting facilities; however the interconnecting door is locked as standard unless requested otherwise.

In these rooms the area next to the bed is 58 inches.

If required we offer complimentary rooms for carers when available.

The clear space under the beds in accessible room is 29 inches.

Accessible rooms have wider door frames and an extra peephole at a lower level (image 3).

Accessible rooms have an emergency pull cord next to the bed which discretely alerts our team that assistance has been requested (image 4).



Image 3

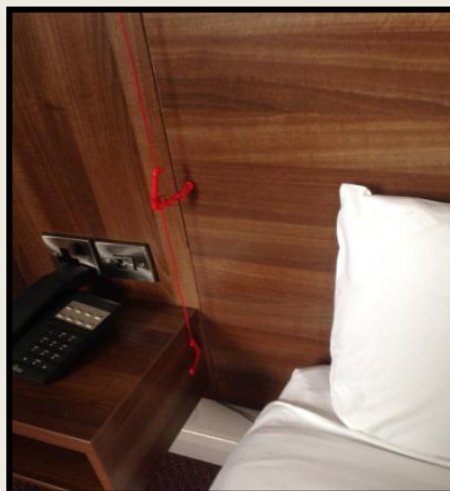


Image 4

BATHROOMS

All Bathrooms

All bathrooms are tiled and at a flat level with the bedroom floor.

The bathroom door is 34 inches wide, the WC is 17 inches high and the sink is 35 inches high.

The bathrooms are well lit with fluorescent tubes. (Image 5)

All bathrooms have a WC, sink, bath with overhead shower and a grab rail. (Image 5)

Sink Tap: This is operated via a lever. Please turn to the left for warm water and turn to the right for cool water.

Bath tap: Turn the tap on the left to turn on the water supply and turn the tap on the right to adjust the temperature.

Shower: The shower is activated by pressing the side button of the tap which turns on the bath water.

Accessible Bathrooms

In the bathrooms of accessible rooms there is extra railing for support and an emergency pull cord which discretely alerts our team that assistance has been requested. (Image 6)



Image 5



Image 6

PUBLIC AREAS

Corridors, Lifts, Stairs and Landings

Corridors: These are well lit with ceiling spot lights and are 50 inches wide at the narrowest point.

Lifts: There are 4 lifts that service all floors. The buttons in all lifts are equipped with Braille and the lift announces which floor it is on as the doors are opening.

Flooring: The lift lobby on the Upper Ground floor is marble. On all other floors this area is carpeted.

Refuge areas with a 2 way intercom are located in the lift lobby from floors 3 to 8.

Upper Ground Guest Lobby and Reception

Our guest lobby area is located on the Upper Ground floor. The floor is at a flat level with the main entrance door. In this area there is informal seating with coffee tables, easy access to the bar and 2 TV screens with Digital TV.

Lighting: The guest lobby is well lit with spotlights, however intensity of lighting does vary depending on the time of day.

Flooring: The flooring is a mixture of marble, laminate tiling and carpet.

Reception: This is the only raised area on the floor. There are two screens, which can display the location of conferences occurring each day. These are also used for promoting hotel services.

Toilets: The nearest facilities (including accessible toilets) are situated next to the bar on the same floor. There are additional toilets at the rear of the restaurant.

Only food or drink purchased on the premises can be consumed in these areas.

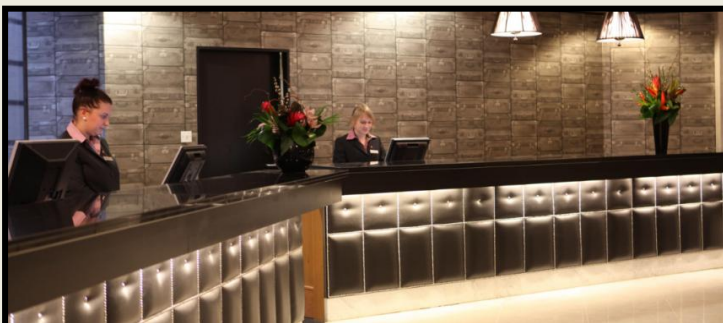


Image 7

Upper Ground Restaurant and Bar

The bar (image 8) and restaurant (image 9) are located on a flat level on the Upper Ground floor.

Furniture can be moved by staff if required to allow adequate positioning of wheelchairs and pushchairs.

Lighting: The lights in the bar and restaurant are dimmed in the evening, however remain on during the day. As the restaurant, the lobby and the reception are on different lighting circuits, lighting can be adjusted as required in individual areas.

Flooring: The flooring is a mix of laminated tiles and carpet.

Toilets: The nearest facilities (including accessible toilets) are situated next to the bar on the same floor. There are additional toilets at the rear of the restaurant.

If a Braille menu is required please ask a member of staff. If unavailable or if preferred, staff will be happy to read the menu aloud.

We endeavour to accommodate any dietary requests and ask to be informed in advance where possible.

The crockery is a mix of white plates and slate tiles depending on the dish to be served. Cutlery is stainless steel.

Tables are not clothed.



Image 8

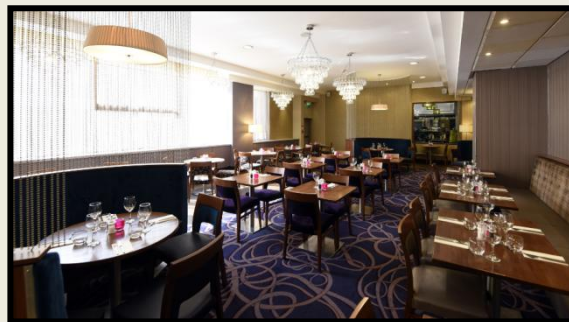


Image 9

Public Toilets

There are 2 sets of public toilets which are located on the Upper Ground floor.

One set is by the bar area, the other set is located at the back of the restaurant.

Access to both facilities is at a flat level to the bar and restaurant floor. (No stairs or ramps)

The height of the WC from floor to seat is 18inches

There is an accessible WC facility in both the ladies and gentlemen's toilets.

In the accessible toilets, the clear space for a wheelchair is 70 inches x 70 inches.

The width of the internal and external doors is either 30 inches or 34 inches depending on location.

If required, there is an emergency pull cord in the accessible cubicles which discretely alerts our team that assistance has been requested.

MEETINGS AND EVENTS ROOMS

The 1st floor is our dedicated conference floor and has 20 meeting rooms.

The largest room can accommodate up to 275 delegates.

These rooms can be accessed by lift or stairs

Lighting: All areas are well lit with spot lights.

Flooring: The 1st floor lift lobby is tiled. Corridors and meeting rooms are all carpeted,

The width of each door opening is 34inches.

All meeting rooms have access to natural daylight, are air conditioned and are DDA compliant.

Furniture inside the meeting rooms can be removed upon request.

Flooring in the 1st floor lift lobby is tiled.

A hearing loop can be provided if requested in advance.

There are toilets on this floor at either side of the lift lobby.



Image 10



Image 11

For any information or enquiries regarding our meetings and events facilities, please email birminghamconference@jurysinns.com or call the hotel direct on 0121 606 9000.

ADDITIONAL INFORMATION AND MEDICAL CONTACTS

Additional Information

Complimentary standard Wi-Fi is available to all guests in the hotel. Please contact reception for the complimentary Wi-Fi code.

We are unable to allow pets or animals on the premises.

We do welcome assistance dogs and can provide a water bowl. Please ask a member of staff upon check in if required.

The signage used in the hotel to display floor information, is of a grey lettering and on a frosted Perspex background.

All staff receive regular training. This includes disability awareness and fire evacuation procedure.

Medical Contacts

Hotel Doctor

There is a hotel doctor who can be called if requested by a guest.

Name: Dr Hyman
Telephone number: Please contact via reception
Prices: 8am -6pm Monday to Friday - £60
6pm to 8am Monday to Friday - £80
Saturdays, Sundays and bank holidays - £80

NHS Walk in Centre:

The nearest NHS walk in centre is on the lower ground floor of the Boots store in the city centre. The centre offers nurse-led walk-in appointments for a range of services and provides fast access to health information, advice and treatment for minor illnesses and injuries

Address: 66 High Street
Birmingham
B4 7TA
Opening hours: Monday to Friday 8.00am – 6.00pm
Saturday 9.00am – 5.00pm
Sunday 11.00am – 3.00pm
Hours may differ on bank holidays and public holidays.

A&E

The nearest accident and Emergency facility is located in City Hospital.

Address: City Hospital,
Dudley Road,
B18 7QH

ACCREDITATIONS

Jurys Inn Birmingham is dedicated in positively working towards being sustainable. We are proud to have been recognised by the Green Business Tourism Scheme and have recently been awarded the Gold Award in Green Tourism

